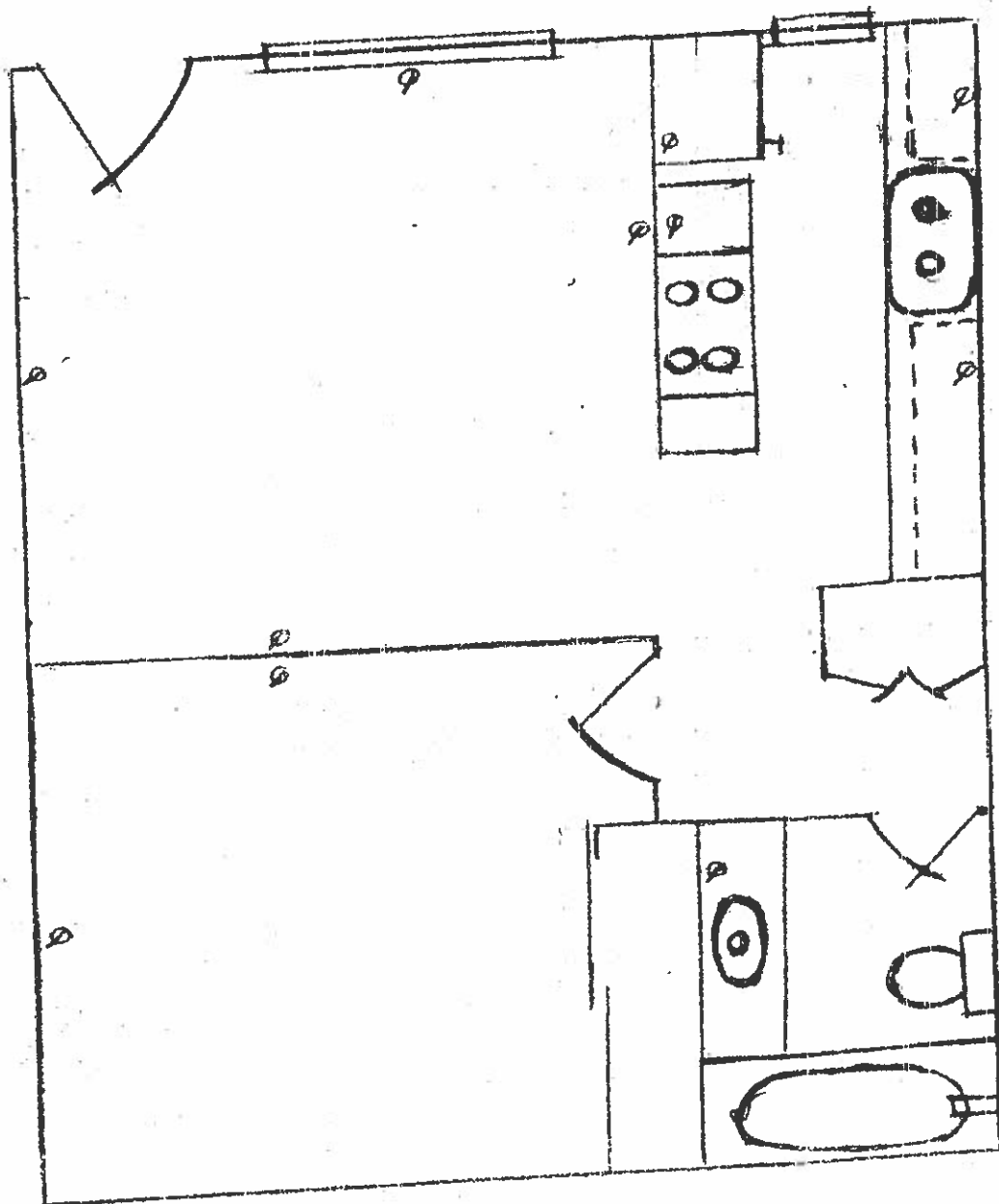


### Design Your Apartment

Your objective is to furnish your apartment with furniture. Design the layout and the flow of your apartment. On the back of the paper in two paragraphs (7 sentences or more for each paragraph) tell me (for the living room and the bedroom) why you pick this furniture and why you placed it where you placed it.



## **FLOOR PLANNING GUIDELINES**

1. Never place furniture in front of a window.
  2. Leave a 3-foot walking path in traffic areas.
  3. If you're decorating a larger room, use larger pieces of furniture such as king sized beds, large couches, chairs, and tables.
  4. If you're decorating a smaller room, use smaller pieces of furniture such as day beds, love seats, small chairs and tables.
  5. Coffee tables may be placed 12"-18" away from couches.
  6. When using area rugs, the furniture goes on the rug or off the rug. Furniture should never be placed half on and half off of the rug. The only exception is the coffee table. A coffee table can be placed on a rug with the remaining couches, chairs, and tables off of the rug.
  7. In a bedroom, the best design includes placing the foot of the bed toward the entry door. (With some small bedrooms, the beds have to go against a wall, but this is not the ideal placement design-wise).
  8. Accessories such as pictures, candlesticks, books, etc. should be placed in odd numbered groupings.
  9. Use similar decorating styles throughout the house. (Don't use country in one room, modern in another, Old World in another, and Mediterranean in another.)
-